



## WHY B-ETL?

- Companies lose millions of dollars every year to excessive condensation build-up, also known as container rain or container sweat.
- Water condensation in container.
- Product damage (moldy, wet, lumpy, odor, fungus, etc.)
- Caused high claim, replacement, insurance loading, quality deteriorate >> incur high cost





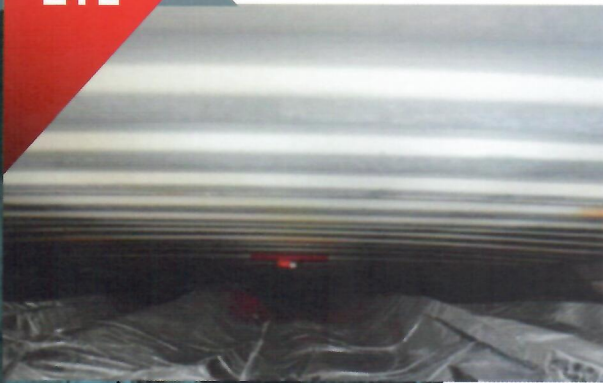
# HOW B-ETL WORKS?

- Create an envelope within container.
- Made of special engineered layer/material.
- Allow moisture to escape out through the liner.
- Prevents condensed water to flow through the liner (water proof).
- Keep humidity level consistently lower at the inside of liner.
- Reflecting up to 97% of the radiant heat.
- The B-ETL is a fully woven reflective liner that is hung into a general-purpose ISO shipping container and allows for forklift loading, hand loading and slip sheet.



## ACTUAL SHIPMENT COMPARISON

ETL



Container Roof : Dry

B-ETL

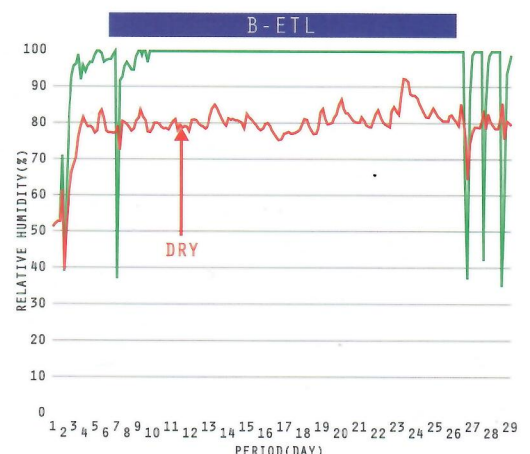
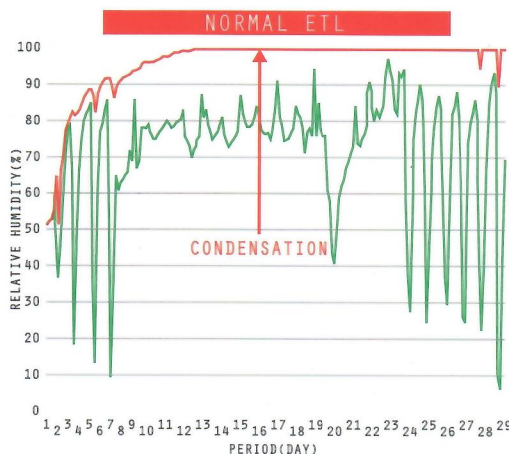


Container Roof : Wet

## HOW ABOUT TEMPERATURE FLUCTUATION?

### COMPARISON ON RELATIVE HUMIDITY

ISO CONTAINER AT OUTDOOR (VERIFICATION)



— OUTSIDE ETL — INSIDE ETL





Size of Container: 20FT GP . Travel: Malaysia to Pakistan . Duration: 3 Weeks



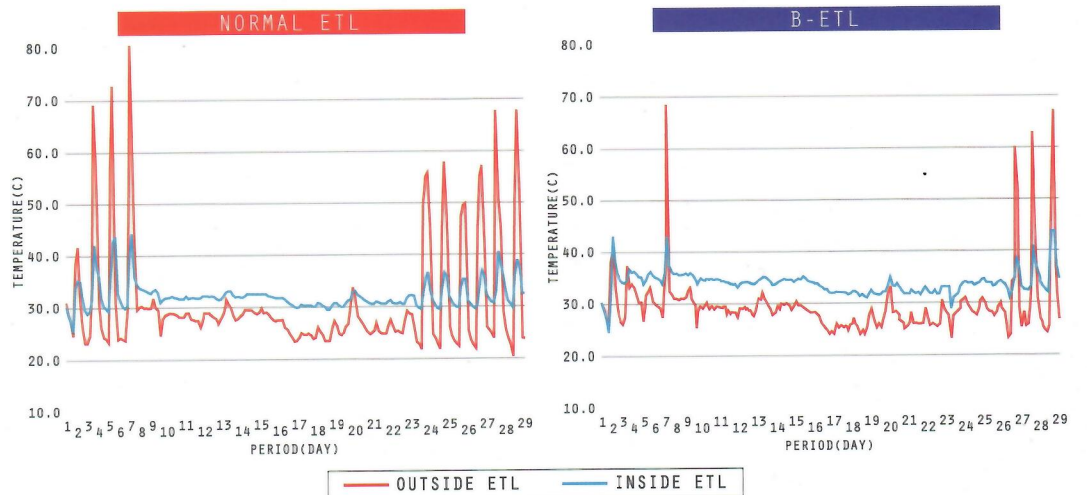
Inside Liner : Wet



Inside Liner : Dry

- B-ETL is highly reflective against thermal radiation.
- Protect goods from dangerous spikes during transportation.

**COMPARISON ON TEMPERATURE**  
ISO CONTAINER AT OUTDOOR (VERIFICATION)





# WHO USES B-ETL?

- Products that releases moisture (e.g. soap bar, oleochemicals, cocoa bean, etc.).
- Container that will experience different climates throughout the shipment.



## PRODUCT SPECIFICATIONS SHEET

Product Design (Roof/Wall) : AL / TIE LAYER / NON WOVEN FABRIC / TIE LAYER / NON WOVEN FABRIC  
 Product Design (Wall) : AL / TIE LAYER / HDPE WOVEN FABRIC / TIE LAYER / MPET  
 Product Design (Floor) : MPET / PE TIE LAYER / HDPE WOVEN FABRIC

	CHARACTERISTIC	TEST METHOD	UNIT (SI)	SPECIFICATION
ROOF/WALL SPECIFICATIONS	Emissivity (Aluminum Surface)	ASTM C1371	Index	≤ 0.06
	Grammage	BS EN 965	g/m <sup>2</sup>	128 ± 20
	Tensile Strength	MD CD	In-House	≥ 85 ≥ 60
	Elongation	MD CD	In-House	≥ 20 ≥ 30
	Water Vapour Transmission Rate	ASTM E 96	g/m <sup>2</sup> /day	≥ 600
WALL SPECIFICATIONS	Emissivity (Aluminum Surface)	ASTM E C1371	Index	≤ 0.05
	Grammage	BS EN 965	g/m <sup>2</sup>	132 ± 20
	Tensile Strength	MD CD	In-House	≥ 500 ≥ 500
	Elongation	MD CD	In-House	≥ 15 ≥ 15
FLOOR SPECIFICATIONS	Emissivity (MPET Surface)	ASTM E C1371	Index	≤ 0.50
	Grammage	BS EN 965	g/m <sup>2</sup>	114 ± 20
	Tensile Strength	MD CD	In-House	≥ 600 ≥ 600
	Elongation	MD CD	In-House	≥ 20 ≥ 15
B-ETL SPEC.	Stitching Length	-	mm	8 - 10
	Packing Specifications	-	-	Each B-ETL shall be wrapped with PE liner



Container Liner



Pallet Cover



AV Cover



AV Liner

20' Liner for standard ISO shipping container | 40' Liner for standard ISO shipping container and high cube | Pallet Covers  
 Airfreight Covers in all sizes | Insulated Heavy Duty Sealing Tapes